

# Intel Edison Work Shop

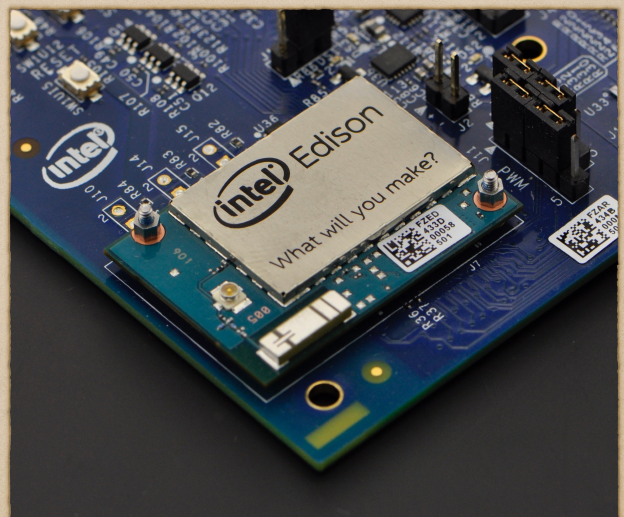
Interconnection frees your life

Angelo



# Intel Edison

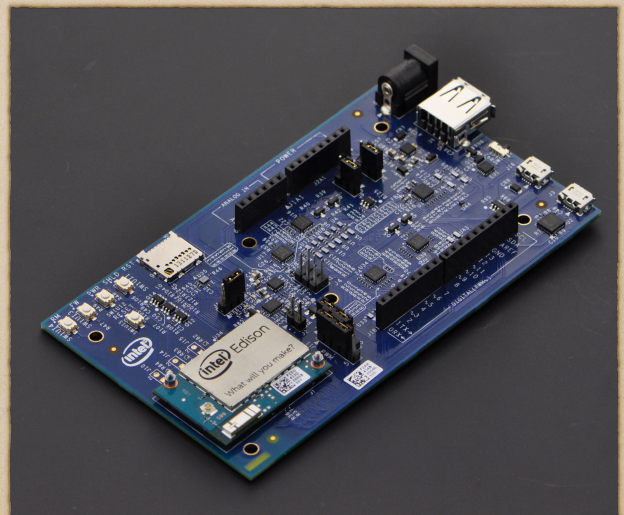
- ◆ 500MHz Dual Core ATOM CPU
- ◆ 100MHz Quark Coprocessor
- ◆ 1GB RAM + 4GB FLASH
- ◆ Wi-Fi + Bluetooth 4.0
- ◆ Small Dimension + Low Power





# Intel® Edison with Arduino Kit

- ◆ Arduino Compatible
- ◆ SD card slot
- ◆ SPI
- ◆ UART
- ◆ I2C
- ◆ PWM





Difference between Edison and Raspberry Pi



Edison is NOT another Raspberry Pi



# Advantage

- ◆ Certification
- ◆ Manufactory
- ◆ Dimension



# Application

- ◆ Wearable
- ◆ Robotics
- ◆ Internet of Things (IoT)



Let's begin